

Specific information for the SIMFLEX Winter 2026 campaign

Sector configuration

For Winter 2026, the Facility shall be divided into three localization Sectors as shown in the [Figure](#) below. Performers shall configure and position sensors consistent with the Sector-based localization basis.

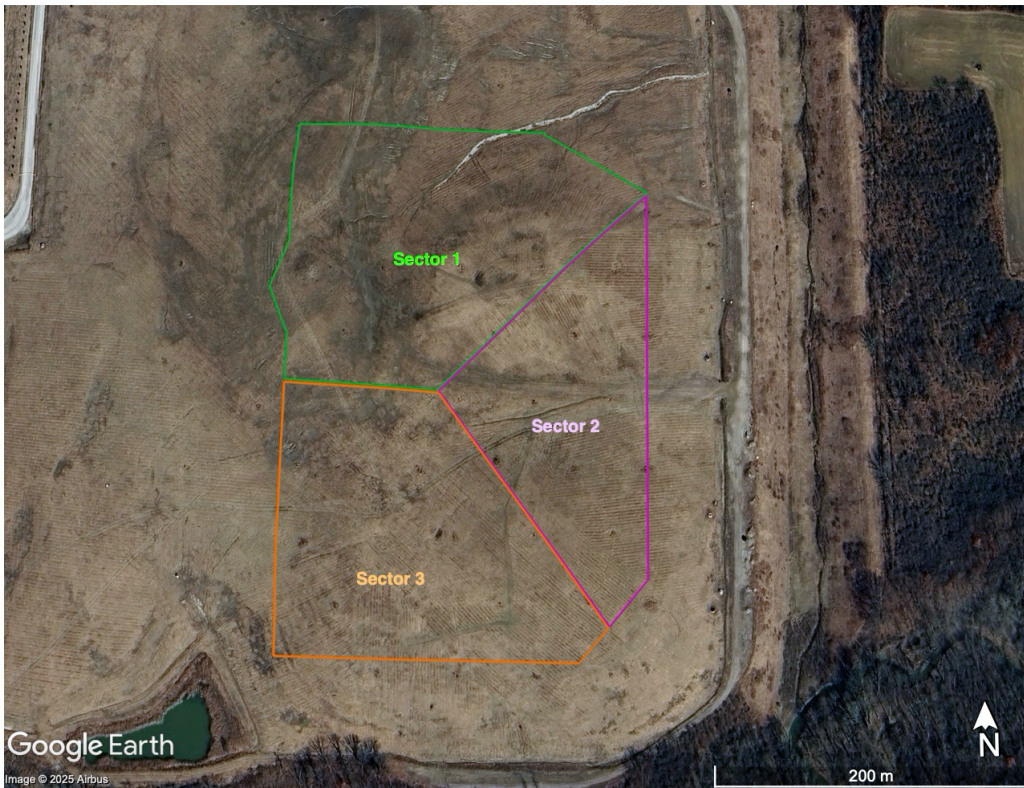


Figure: Facility Localization Sectors for the Winter 2026 campaign. The Facility is divided into three localization Sectors: Sector 1 (north, green), Sector 2 (central, purple), and Sector 3 (south, orange). The corresponding KMZ/KML file will be provided to Performers in advance of the campaign to support sensor placement and reporting.

Controlled Release configuration

For the Winter 2026 survey period, the Emission System includes eight point-source Emission Points and two area-source configurations (perforated tubing legs) within a defined test area of approximately 20 acres or less, intended to emulate fugitive emission sources across a landfill surface.